



B O U N D L E S S
CHADWICK ARCINUE

ABOUT THE ARTIST

Experimentation with intuition—this is the hallmark of Chadwick Arcinue’s artistic eye, which has grown and flourished from a talent long in the awakening. Its first stirrings are seen in his first painting, *Boston*, a dreamy impressionist vision of cherry trees in bloom completed nearly 20 springs ago when he was an MBA student at Boston College. Since then, even as he made career advances in finance, Chadwick continued to explore color and texture, developing more abstract and expressionist pieces based on the techniques self-taught during his “impressionist school years.”

His inner artist was given free rein only in the past two years as Chadwick put aside his successful career in the world of finance, “picked up the brush” and established The Chadwick Concepts. By all measure, Chadwick the artist has happily come full force into the fore, as proven by the recent prodigious output in his paintings and design work. His *Seascapes* reveal bold and brisk brushstrokes that excite the eye; the *Dreamscapes* collection beguiles the viewer with highly textured backgrounds and puzzle-like geometric shapes; the *Red* series displays the power and energy of this most vibrant of all hues, expressed through the interplay of varying shades, shapes, forms and textures.

Today, Chadwick continues his intuitive artistic journey, always seeking to explore and discover new ways to express the impulse that made him want to capture the shimmering beauty of cherry blossoms that spring so many years ago.

Born in Manila, the Philippines, Chadwick maintains a studio in Hoboken, New Jersey (USA), and galleries in New York City, Miami, Vienna, and very soon in Rome. He and his wife Leanne live in New Jersey, USA.

ABOUT *BOUNDLESS*

We are of the earth and the sea. As we emerge from the “canvas of our being,” we figuratively push the horizon down to begin to experience the insubstantial sky. We reach out to this transcendent space but we cannot grasp it; yet at our core we are relentlessly driven to move towards it.

The 16 original works in *Boundless* distinctively explore this journey. The starting four seascapes describe the space of origin, imbuing the scene with color and texture in new and daringly unconventional ways, reflecting the different fabrics of time and reality. Here, the horizon defines the tension between the sea and the sky, between earth and heaven. The horizon—flat, constant—is the serene arbiter between darkness and light, both the seam and seamless connection between the two, riveting our attention as to what is temporal and what is infinite.

Then, with the next 12 skyscapes, Chadwick breaks out into the dimension of air, literally, as these are all executed on unprimed linen, possessing an inherent translucence, with some areas layered so thinly with the medium as to seem unfinished, evocative of an unfulfilled yearning, a seeking of completion, edges with no end.

Each of us exists in our own separate seascape. Chadwick’s art calls us to the task of always going beyond, to transcend the horizon and to reach the skyscape of one’s own, and one’s own only. For if ever we succeed in this quest, even if only for fleeting moments, we will find ourselves...boundless.





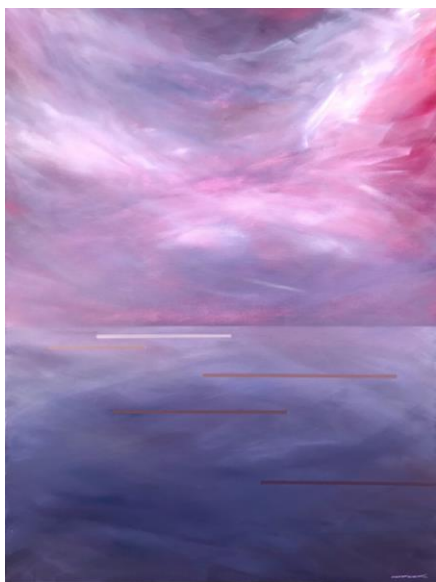
Seascape XIX 2019
 100 x 76 cm (40" x 30")
 acrylic on canvas



Seascape XX 2019
 100 x 76 cm (40" x 30")
 acrylic and resin on canvas



Seascape 21 2019
 100 x 76 cm (40" x 30")
 acrylic on canvas



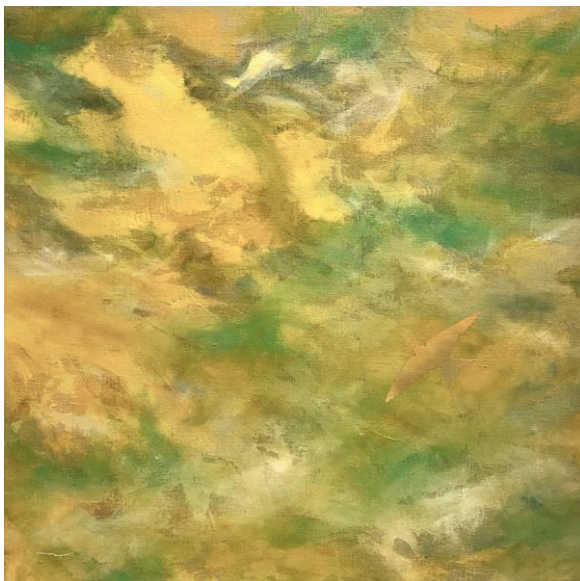
Seascape 22 2019
 100 x 76 cm (40" x 30")
 acrylic on canvas



Skyscape 1 2020
100 x 100 cm (40" x 40")
acrylic on linen



Skyscape 2 2020
100 x 100 cm (40" x 40")
acrylic on linen



Skyscape 3 2020
100 x 100 cm (40" x 40")
acrylic on linen



Skyscape 4 2020
100 x 100 cm (40" x 40")
acrylic on linen



Skyscape 5 2020
100 x 100 cm (40" x 40")
acrylic on linen



Skyscape 6 2020
100 x 100 cm (40" x 40")
acrylic on linen



Skyscape 7 2020
100 x 100 cm (40" x 40")
acrylic on linen



Skyscape 8 2020
100 x 100 cm (40" x 40")
acrylic on linen



Skyscape 9 2020
100 x 100 cm (40" x 40")
acrylic on linen



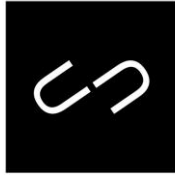
Skyscape 10 2020
100 x 100 cm (40" x 40")
acrylic on linen



Skyscape 11 2020
100 x 100 cm (40" x 40")
acrylic on linen

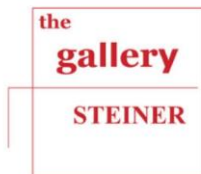


Skyscape 12 2020
100 x 100 cm (40" x 40")
acrylic on linen



THE CHADWICK CONCEPTS

www.chadwickconcepts.com | info@chadwickconcepts.com
720 Monroe St., Suite C-201A, Hoboken, NJ 07030 USA



www.gallery-steiner.com | office@gallery-steiner.com
Kurrentgasse 4, 1010 Vienna, Austria